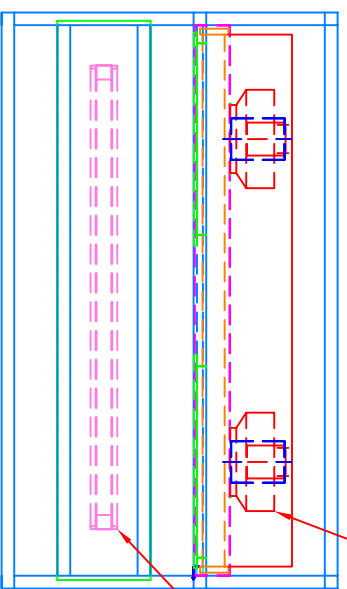


ADDITIONAL SPECIFICATIONS:

1. UNIQUE FILTER CLAMP DESIGN. FILTER GASKET COMPRESSED BY TURNING SET SCREWS IN THE FRONT OF THE UNIT. SEALED CABINET.
2. HEPA FILTER ASSURES 99.99% FILTRATION EFFICIENCY FOR PARTICLES 0.3 MICRONS AND LARGER TO PROVIDE BETTER THAN CLASS 100 CONDITIONS.
3. LIGHTWEIGHT ANODIZED ALUMINUM FRAMEWORK RIGIDLY CLAMPED TOGETHER.
4. EASILY DETACHABLE TABLE AND CANOPY ALLOWS FOR EASY SITE ASSEMBLY AND MOVING THRU DOORWAYS.
5. FACTORY CERTIFIED TO MEET OR EXCEED FEDERAL STD 209, CLASS 100 CONDITIONS/ISO 14644, CLASS 5
6. NEGATIVE CABINET DRAWS ANY FILTER SEAL BYPASS AIR TO SYSTEM BLOWERS ELIMINATING NON-FILTERED AIR FROM ENTERING WORK AREA.



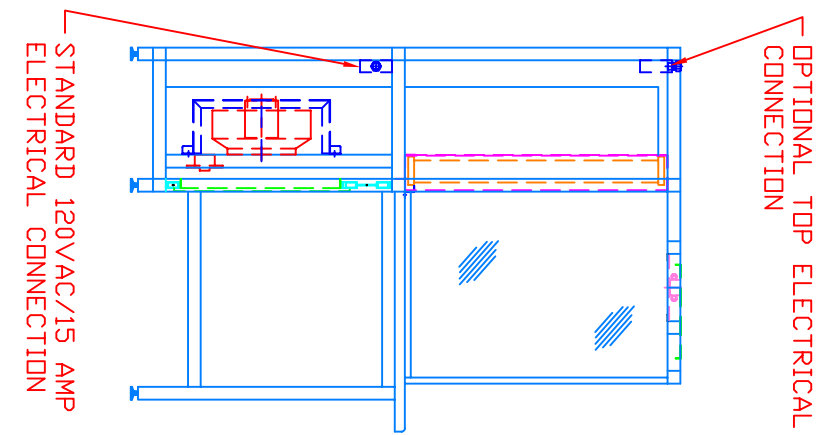
BACKWARD CURVED FANS WITH SPEED CONTROL

TWO T5 FLUORESCENT LIGHTS, PRISMATIC LIGHT DIFFUSER

OPTIONS:

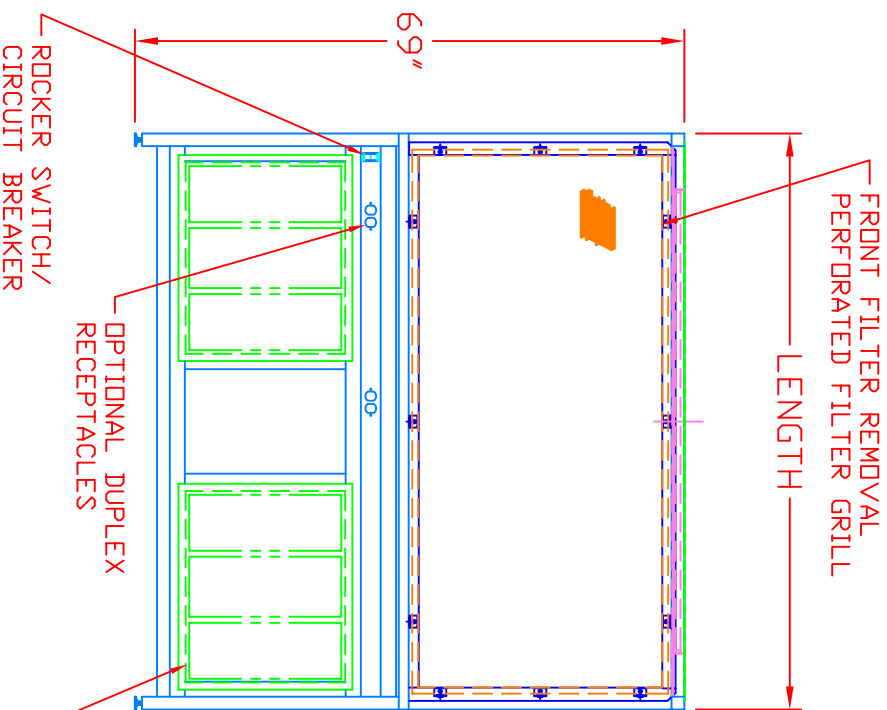
1. DIFFERENTIAL PRESSURE GAUGE TO MONITOR FILTER LOADING.
2. EPOXY COATED FRAMEWORK.
3. ULPA FILTERS.
4. CUSTOMER SPECIFIED TABLE HEIGHT AND DEPTH.
5. STAINLESS STEEL OR HIGH WEAR TABLE TOPS.
6. POWER CORD.
7. HANGING RODS AND HOOKS FOR I.V.'S.
8. IONIZING BARS FOR STATIC ELECTRICITY CONTROL.
9. GLASS, LEXAN OR STAINLESS SIDE PANELS.
10. ISOLATED TABLE TOP FOR MICROSCOPE WORK.
11. PVC, POLYPROPYLENE OR PLASTIC CORE ALUMINUM PANELS.

MODEL	LENGTH	BASE UNIT WIDTH	CFM	WEIGHT (LBS)
STD 48C	48"	18"	1000	300
STD 72C	72"	18"	1500	400
STD 96C	96"	18"	2000	500



OPTIONAL TOP ELECTRICAL CONNECTION

STANDARD 120VAC/15 AMP ELECTRICAL CONNECTION



FRONT FILTER REMOVAL PERFORATED FILTER GRILL

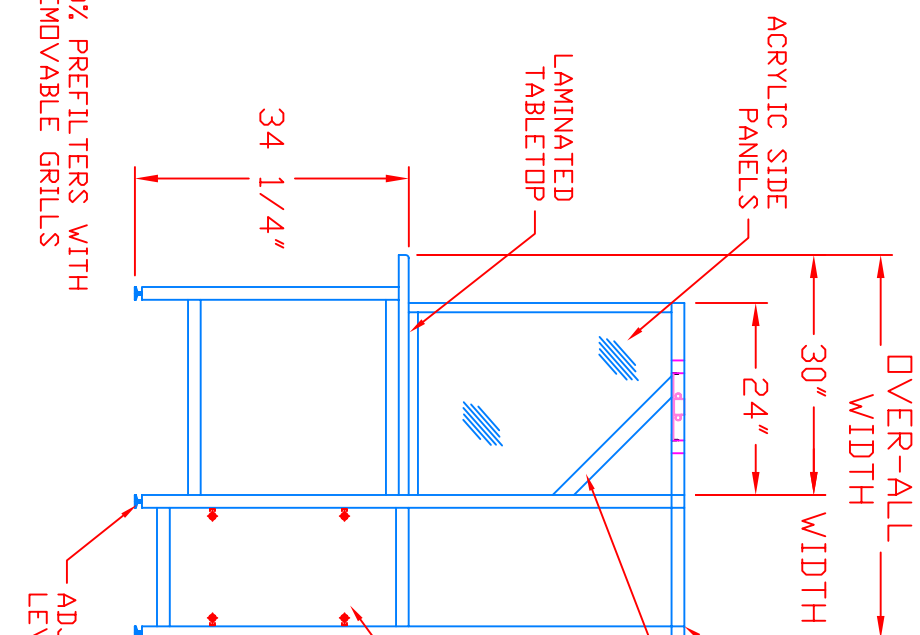
LENGTH

69"

ROCKER SWITCH/CIRCUIT BREAKER

OPTIONAL DUPLEX RECEPTACLES

30% PREFILTERS WITH REMOVABLE GRILLS



OVER-ALL WIDTH

30"

ACRYLIC SIDE PANELS

24"

LAMINATED TABLETOP

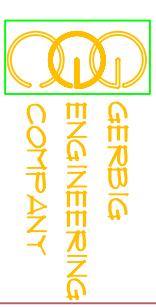
34 1/4"

OPTIONAL DOUBLE SIDED UNIT, "D" DIM BECOMES 22.00

OPTIONAL CANOPY SUPPORT REPLACES SIDE PANELS TO ALLOW END TO END INSTALLATION

SIDE ACCESS PANELS

ADJUSTABLE LEG LEVELERS



CLASS 100 CROSSFLOW WORKSTATION

SHEET CONTENT

CROSS FLOW WORKSTATION, CLASS 100

SCALE: 1/2"=1'-0" DATE ISSUED: 11-01-04

JOB #: FILE PATH:

DRAWN BY: GAM
CHECKED BY: XXX

APPROVED BY: DATE:

SHEET NUMBER