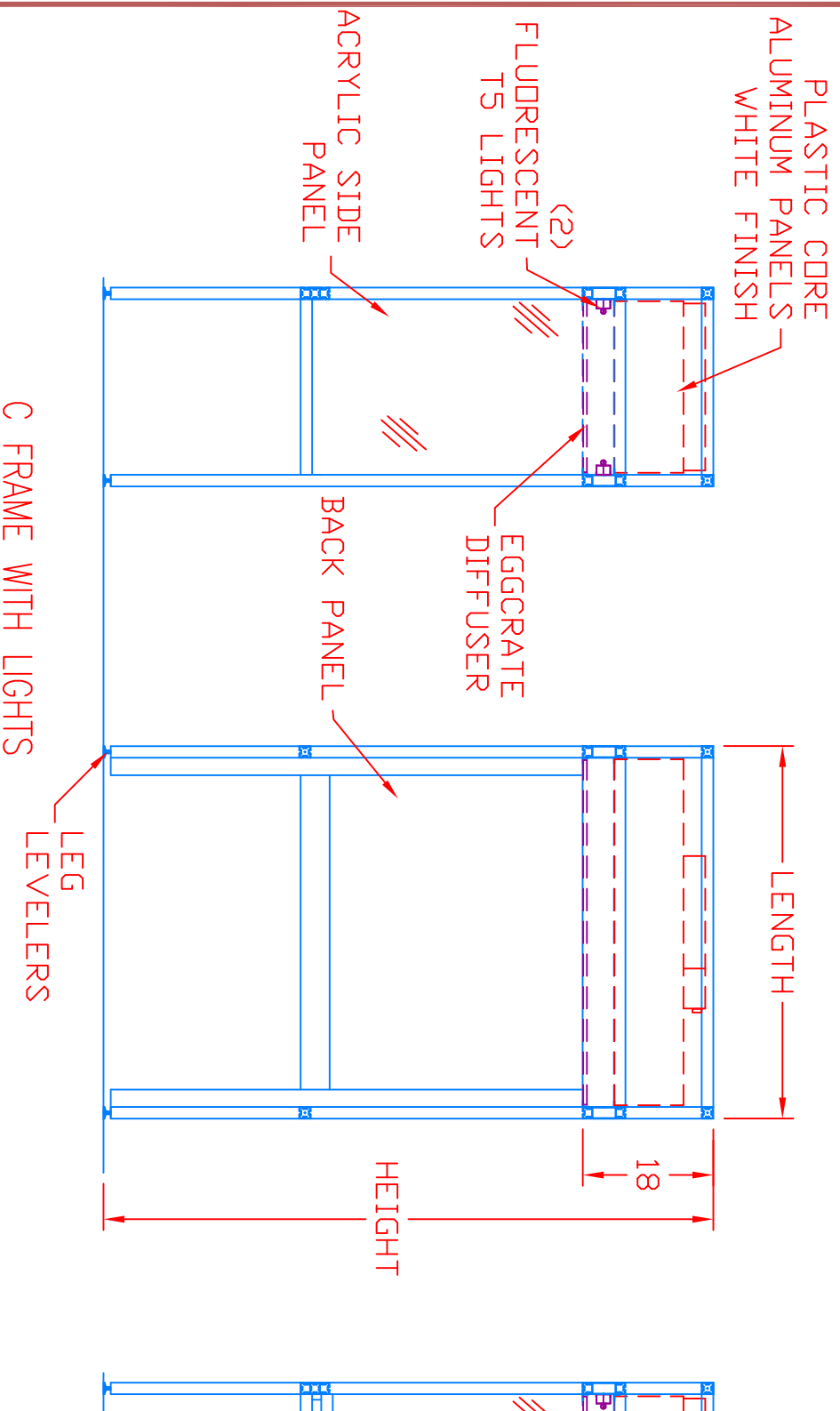


**ADDITIONAL SPECIFICATIONS:**

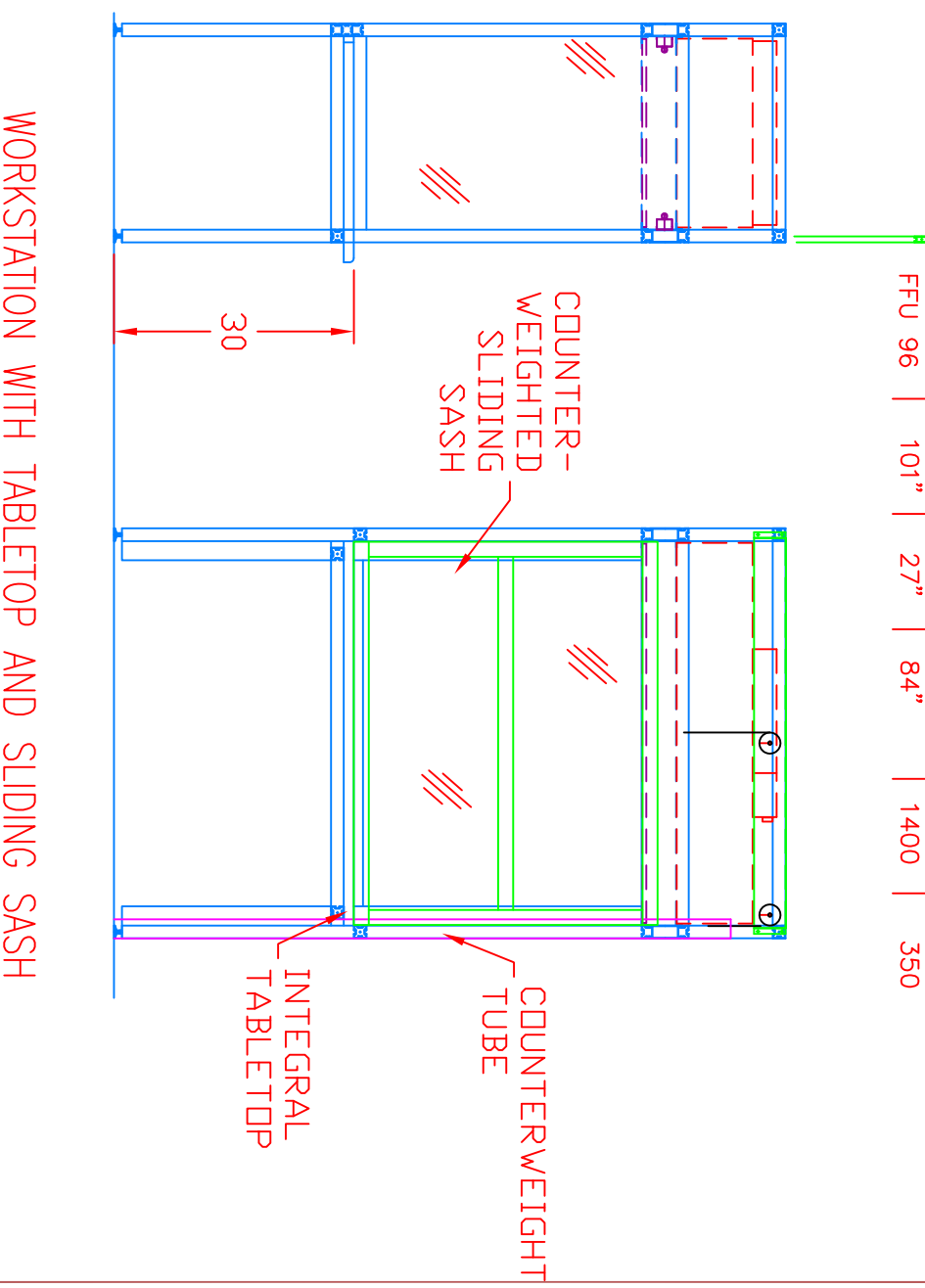
1. PROVEN FAN-FILTER UNIT IS THE QUIETEST AVAILABLE. DEPENDABLE A/C MOTOR HAS A 3 SPEED SWITCH.
2. HEPA FILTER ASSURES 99.99% FILTRATION EFFICIENCY FOR PARTICLES 0.3 MICRONS AND LARGER TO PROVIDE BETTER THAN CLASS 100 CONDITIONS.
3. LIGHTWEIGHT ANODIZED ALUMINUM FRAMEWORK RIGIDLY CLAMPED TOGETHER.
4. EASILY DETACHABLE FRAME ALLOWS FOR EASY SITE ASSEMBLY AND MOVING THRU DOORWAYS.
5. STD. WIDTH FACTORY CERTIFIED TO MEET OR EXCEED FEDERAL STD 209, CLASS 100/ISO 14644 CLASS 5.
6. STANDARD ELECTRICAL CONNECTION 120VAC, 15 AMP.

**OPTIONS:**

1. DIFFERENTIAL PRESSURE GAUGE TO MONITOR FILTER LOADING.
2. POWDER COATED FRAMEWORK.
3. ULPA FILTERS.
4. CUSTOMER SPECIFIED LENGTH AND HEIGHT.\*WIDTH UP TO 48" MAY CHANGE DESIGNATION TO CLASS 1000.
5. CUSTOM TABLES WITH STD LAMINATED TOP OR STAINLESS STEEL OR HIGH WEAR TOPS
6. POWER CORD
7. IONIZING BARS FOR STATIC ELECTRICITY CONTROL.
8. GLASS, LEXAN OR STAINLESS SIDE PANELS.
9. FOR USE OVER EXISTING TABLETOP OR WORK SURFACE CAN BE SECURED TO SUPPROT FRAME.
10. ACRYLIC OR LEXAN HINGED VIEWING WINDOW OR COUNTERWEIGHTED SLIDING SASH.
11. PVC, POLYPROPYLENE OR PLASTIC CORE ALUMINUM PANELS.
12. DC MOTOR THAT ADJUSTS SPEED TO COMPENSATE FOR FILTER LOADING
13. CHROME PLATED WIRE SHELVES..



MODEL	LENGTH	WIDTH	OVER-ALL HEIGHT	CFM	C FRAME WT. (LBS)
FFU 48	51"	27"	84"	700	180
FFU 72	77"	27"	84"	1050	240
FFU 96	101"	27"	84"	1400	350



**FAN-FILTER WORKSTATION  
STANDARD**

**SHEET CONTENT**

FFU WORKSTATION, DOWNFLOW

---

SCALE: 1/2"=1'-0" DATE ISSUED: 3-21-07

---

JOB # STANDARD FILE PATH:

---

DRAWN BY: GAM

CHECKED BY: XXX

---

APPROVED BY: \_\_\_\_\_ DATE: \_\_\_\_\_

SHEET NUMBER